



On the RIVER

Connecting ALVA Florida NEIGHBORS and NEIGHBORHOODS

TO SUBSCRIBE or offer articles (maximum 300-500 words) or to send jpeg photos of Alva area happenings, or to contact the publisher/editor with any questions, email Ken DeWalt kendewal1@gmail.com. The deadline for receipt of any materials is the 15th of the month previous to the month you wish the articles to run. Issues go out before the 1st of each month, and are subject to editing if necessary.

Now accepting advertisements. See our terms on the last page of this newsletter

www.ONTHERIVER.ORG Archive of all OTR newsletters and lots more, all FREE including a

link to www.ALVAFL.org/newsletter to see previous publisher's Alva newsletters archived since 2010

Alva boat ramp to get \$500,000 upgrade, with a second boat launch

(TY Bill Smith, Fort Myers News-Press, for primary article and photo)

The 30th anniversary year of the Alva boat ramp in northeast Lee County will be marked by construction of a new facility, with a new dock and two boat-launching lanes onto the Caloosahatchee River. The rustic ramp off a rustic road (though just newly re-paved) in rustic Alva has become a busy place for boaters, with average use climbing to 1,150 people per month.

"We have seen increases in use, it is amazing over the years," county Recreation Director Jesse Lavender said, comparing the use of the Alva ramp to the use of the boat ramp in Matlacha.

Improved access is the major goal of the work, Lavender said, including parking lot improvements for the facility (in the same or similar land use footprint). "The main component is making it ADA compliant," Lavender said.

The project will cost about \$500,000. In addition to extending docks, a second boat launch will be added to shorten the wait to get boats in the water.

Availability of boat ramps in the county has been reduced with the loss of a ramp in downtown Fort Myers. A ramp near Centennial Park was closed when construction of the Luminary Hotel began.

Now, where will all those new boaters park?



ALVA INC

meets every second Tuesday of the month at 7pm at the Alva Community Center.

We discuss items pertinent to our community, families, schools, and homes.

Join us to learn what's happening, and how you may be a part of what's happening as Lee County Grows eastward toward our country haven. www.ALVAFL.org

One of Alva INC's professional sponsors: COUNTRY CARE PET SITTING, 863-610-1607

20 acres purchased to extend Alva Scrub Preserve

(TY WFTX, Fox 4, Digital Team)

The Lee Board of County Commissioners voted August 6th to pursue the purchase. The county purchased the property for \$179,100, plus costs.



This 20-acre addition to the preserve squares off a western portion of Alva Scrub Preserve. Portions of the existing preserve are home to families of Florida scrub-jays, a state and federally listed threatened species.

The primary objective for the preserve is maintaining the existing habitat for scrub-jays, as well as enhancing disturbed upland ecosystems.

Enhancements include prescribed fire, plantings, pasture restoration and removal of invasive exotic plants and animals.

Conservation 20/20 is Lee County's environmentally sensitive land acquisition and management program, and has preserved 29,945 acres since its inception. For more information, visit www.Conservation2020.org.

Harriet and M15 don't disappoint; North Fort Myers eagle pair produces second egg

(TY Michael Braun, Fort Myers News-Press)

Nov 16, 7:25 p.m.: "Nancy Phillips: Was watching and thought something is going on and then M flew in, oh wow, I just knew it! Way to go."

Harriet and M15 got the egg derby underway Tuesday afternoon with the production of the first egg. As thousands watched the Eagle Cam online Tuesday, shortly before 5 p.m., Harriet hunched over and out plopped the bright, white shell of an eaglet-to-be.



As has been the case in most years the multiple camera provided a running 24/7 view of the eagle couple.

After laying the second egg, Harriet and M15 did the typical new parent chores, cleaning up and preparing the new addition. Harriet then rolled the eggs around a bit to position them for incubation, settled in, drooped her head and went to sleep. M15 stood sentinel nearby in the "attic," a higher portion of the tall slash pine where the nest is located along Bay Shore Road in North Fort Myers.



Happenings in LABELLE this season!

firehouse community theatre inc.

Another great line-up for their 27th Season!

"A Nice Family Christmas" (Not your traditional Christmas Comedy) Dec 6, 7, 8 & 12, 13, 14, 15

"Nunsense" (Comedy/Musical) Jan 10, 11, 12 & 16, 17, 18, 19

"Butterflies Are Free" (Comedy) Feb 7, 8, 9 & 13, 14, 15, 16

"'til Beth Do Us Part" (Comedy) March 13, 14, 15 & 19, 20, 21, 22

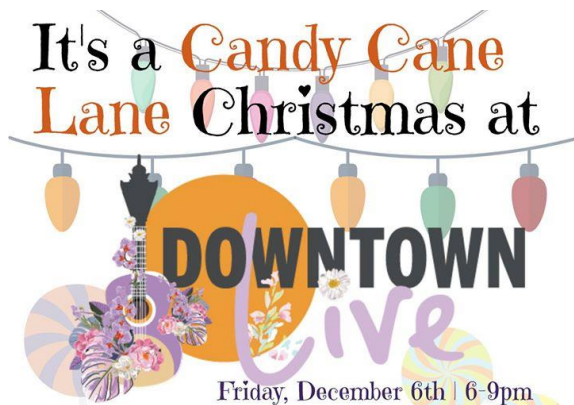
"A Murder Has Been Renounced" (Mystery) April 17, 18, 19 & 23, 24, 25, 26



241 North Bridge Street, Labelle, Florida

www.firehousecommunitytheater.com

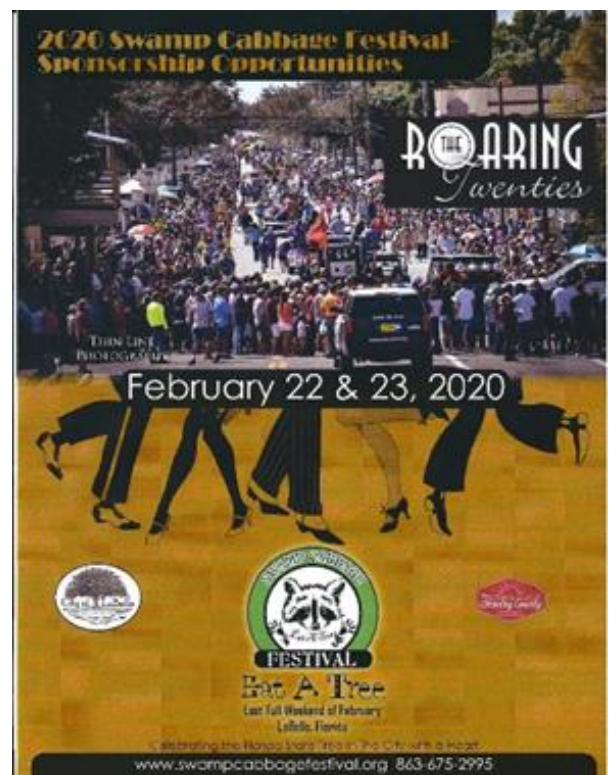
863-675-3066



Christmas Parade! Hay Rides!
Vendors! SANTA!!!!

Parade Lineup @ 4:30pm
Parade starts at dusk with Santa right after!
Christmas Music by Coby Wilkins and
Carlson Methodist Church!
Forrey Grill's Cranberry Punch!

All thanks to our sponsors!
Riverside Real Estate, Cox AC, Forrey Grill, BMF Electric
Inc & Oak Electric LLC!





JOANN

Featured In Client Stories,

When Joann spoke to us, it was just a few days after her husband died. She volunteered at a food bank pantry at a local church in Fort Myers, but now she's become a client. "I'm here because I have a hard time making ends meet," Joann said. "I have a cleaning business, and I have a few clients. I could use a few more." She rattled off some of the bills she pays: rent, electricity, cable, phone, doctor's bills, vet bills. She sends money to her two young adult children up north. "By the time I get done, I don't have enough for a lot of things," Joann said. Like food.

Give TIME. Give MONEY. Give FOOD.

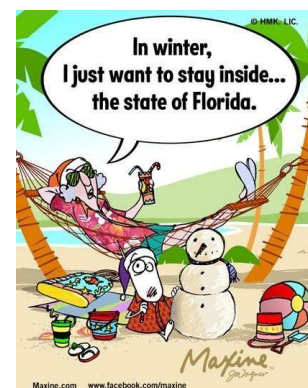
To make a donation, call (239) 334-7007 or visit harrychapinfoodbank.org.



Friends of Okeechobee Waterway West

**Dedicated to preserving and enhancing the
natural and recreational resources of The
Okeechobee Waterway**

Contact Bev MacDonald at friendsofoww@gmail.com for more information.



A nonprofit organization is seeking the community's help in protecting children this school year by continuing the momentum of placing benches at school bus stops throughout Lehigh Acres. The Southwest Florida Shield Foundation Founder James Branham said the young lady who was running Benches for Our Babes merged with their organization because they became a 501c3 organization in June. Now the program is called Shield4Kids.



"We are trying to provide bus stops with a bench for the kids, so they are not standing in the road. Two little girls were killed last year. They weren't visible. That's where this program came in," he said. "We are collecting donations and grant money to buy benches for these kids. "So far 75 benches are scattered throughout Lehigh Acres with the hope of placing another 30 throughout the community. "Everyone has to stick together. You don't have to have kids to care about human life. Our biggest motto, move over for life, period," Branham said.

Are any ALVA folk interested in sponsoring bus stop tables for their children?

CONTACT: James Branham, Director, at swfloridashield@yahoo.com



**Services available for all of ALVA at
the Dr Phyllis L Russ Community
Center**

2541 Charleston Park Dr. Alva, FL 33920

Contact LASHAY RUSS for information

Charlestonpark1926@gmail.com

239-728-8895

TAX SEASON IS GETTING CLOSE!!

COME BY THE DR PHYLLIS RUSS CENTER SIGN-UP FOR FREE VITA (VOLUNTEER INCOME TAX) PREPARATION. INDIVIDUALS WHO EARN A INCOME OF \$66,000 OR LESS CAN HAVE FEDERAL TAX RETURNS PREPARED, E-FILED AND DIRECT DEPOSIT FOR FREE BY UNITED WAY'S VOLUNTEER INCOME TAX ASSISTANCE(VITA) PROGRAM. UNITED WAY IRS-CERTIFIED VOLUNTEERS WHO ARE PASSIONATE ABOUT TAXES WILL PREPARE YOUR RETURN AND DETERMINE IF YOU ARE ELIGIBLE FOR EARNED INCOME TAX CREDIT(EITC) AND/OR CHILDCARE CREDIT WHEN YOU FILE.



Liberation Church of Charleston Park serves almost 100 meals on Thanksgiving Day to their neighbors in their own and the Harvester Company neighborhood in CP. TY Art Nicolette and Lamb of God Lutheran Church of Estero, FL, for creating this FEED THE 5000 ministry to all of Lee and Collier Counties, through churches like Liberation!



Members will receive 5% reward points towards the total purchase of donated goods, no minimum required.

This Program is valid when you shop locations in our Southwest Florida locations only, which include Lee, Collier, Charlotte, Glades and Hendry counties.

How Do I Join or Update my Perks info and start receiving PERK ALERTS? STEP 1 - the next time you shop in our stores, make sure you sign up at the register or ask the cashier to check that your VIP Perk information is correct in order to begin earning points.

STEP 2 - In order to start getting PERK ALERTS and upcoming specials in your email, fill out the form at www.goodwillperks.com.

AND!!!! Every month there is a major special deal with BIG DOLLARS off at all our stores for VIPS!!!



Just a 30-minute drive from ALVA VILLAGE

Discover the natural heart of Florida on a narrated 90-minute eco-tour in a specially built SWAMPBUGGY.

Experience the thrill of seeing alligators, birds, perhaps deer, wild hogs, wild turkeys, sandhill cranes and more, often coming within a few yards.




SOUNDS OF THE NIGHT TOUR

Listen To Frogs, Owls, Gators and Other Sounds of our Florida Ecosystem.

DATES: 11/30, 12/21, 1/25, 2/21, 3/21, 4/18, 5/16 | 5:30P (arrive by 5P)

COST: Seniors 55+: \$23 | Adults \$24 | Children 3-12 \$16 (plus tax)
Approximately 90 Minute Tour

Tour will take you to the Boardwalk & Gator Bridge. Flashlights are discouraged. Our guide will have a spotlight. Long sleeves, long pants and closed toed shoes are recommended. Season Passes are not valid for special events.

RESERVATION REQUIRED!
LIMITED AVAILABILITY! BOOK ONLINE:
BabcockRanchEcoTours.com/BookNow
or call us @ 800.500.5583



8502 FL-31, Punta Gorda, FL 33982 | info@BabcockRanchEcoTours.com

Travel through four different ecosystems including Telegraph Cypress Swamp. Our guides will enhance your experience with their commentaries.

800) 500-5583

info@BabcockRanchEcoTours.com
<https://babcockranchecotours.com/>

ALVA favorite, Ross Chastain, gets so close. “GOSH, DANG!”

(TY Zack Albert NASCAR.com November 16, 2019)



Ross Chastain finished fourth, with Brett Moffitt fifth and Stewart Friesen a fading 11th after the Ford EcoBoost 200. Austin Hill drove to his fourth win of the season, leaving the series' Championship 4 to fight it out in his mirror. Crafton won that battle with a strong second, and the rest of the quartet struggled to keep up.

Chastain's Niece Motorsports No. 45 Chevrolet came closest on the leaderboard, but his margin on track was nine-plus seconds behind Crafton's ThorSport Racing No. 88 Ford. The Alva, Florida, watermelon farmer had the makings of a dream season with three wins, a midseason shift to Gander Trucks eligibility and a spirited local rooting section on hand for the finale. Though he led 36 laps (second only to Hill), Chastain was unable to keep pace with the race winner and Crafton down the final stretch.

“Good job, guys. Heck of a season. Gosh dang,” Chastain told his No. 45 crew on the cool-down lap. “Thank you, Al (Niece, team owner). Close, close.”

'Tis the Season of Giving!

(TY Bob Snyder, OUROC)

This is the time of year when many people focus on their holiday and end-of-year giving. If you are considering making a donation, take time to research the charity and make sure it is legitimate.

All charities soliciting within the state of Florida (excluding religious, educational, political and governmental agencies) are required to register and file financial information with the Florida Department of Agriculture and Consumer Services. Some organizations may spend as much as 95 percent on their purpose or cause, while others spend more on administrative costs. It is up to the donor to determine if their contribution will be spent the way they intend.

Keep the following tips in mind before agreeing to donate:

Ask for financial information, such as a copy of the organization's IRS 990 income tax return, annual report or a breakdown of how the money is spent.

Ask how your contribution will be used.

Ask if the caller is a volunteer or a paid solicitor if you are solicited by telephone.

Ask the solicitor for their license number.

Contact the FDACS toll-free hotline at 1-800-HELP-FLA (435-7352) or use our online Check-A-Charity tool at FloridaConsumerHelp.com to verify registration and financial information.



A bit of ALVA History

The ALVA Railroad

Once I built a railroad, I made it run. Made it race against time

Once I built a railroad, now it's done. Brother, can you spare a dime?

Lyric written in 1930 by lyricist E. Y. "Yip" Harburg and composer Jay Gorney, "Brother, Can You Spare a Dime?"

The Railroad comes to Southwest Florida



(Thanks to: <https://www.american-rails.com/seaboard>) The Seaboard-All Florida Railway was a subsidiary of the Seaboard Air Line Railroad that oversaw two major extensions of the system in the early 1920s to southern Florida on each coast during the land boom. These two extensions were heavily championed by Seaboard president S. Davies Warfield (who died months after its completion), and were constructed by Foley Brothers railroad contractors. Both extensions also allowed the Seaboard to better compete with the Florida East

Coast Railway and the Atlantic Coast Line Railroad, who already served the lower east and west coasts of Florida respectively.

The Seaboard All-Florida Railway's west coast route commenced operation on January 7, 1927, and the east coast route began service the following day.

Begun in Fort Ogden, branching off of the Seaboard's recently acquired Charlotte Harbor and Northern Railway, the line proceeded directly south in a nearly straight trajectory to Fort Myers where it crossed the Atlantic Coast Line's competing route twice en route to Fort Myers. Some of the former right of way is now a dirt road through the Fred C. Babcock/Cecil M. Webb Wildlife Management Area in southeastern Charlotte County; as the line approached Fort Myers, it crossed the Caloosahatchee River on a long drawbridge just downstream of the original Tamiami Trail Bridge. The pier at Riverside Park in East Fort Myers is located where the bridge crossed the river.



A Seaboard Freight in Southwest Florida in the early 1950's

In Fort Myers, the passenger depot (which survives today) was located just south of the river at the intersection of Palm Beach Boulevard (State Road 80) and East Riverside Drive. A separate freight depot (which also survives) was located a short distance south of the passenger depot on Michigan Avenue. Today, Seaboard Street (eastbound State Road 80) travels along the former right of way. From Fort Myers, the line continued south out of the city along Palm Avenue and the west side of the Ten Mile Canal, closely paralleling the Atlantic Coast Line Railroad's competing route (operated today by Seminole Gulf Railway) on the other side of the canal toward Naples.

The railroad comes through Alva

(Thanks to George Austin, of Alva, for some of the following information)

In addition to the main route, two branches existed from Fort Myers to LaBelle and Punta Rassa; the thirty-mile LaBelle branch began south of the Fort Myers freight depot and ran just south of Michigan Avenue before turning northeast and continuing just south of and parallel to State Road 80 through Olga, Alva, Charleston Park, Floweree, it

terminated in downtown LaBelle at a depot at Main Street and Seminole Avenue. A planned further expansion from LaBelle to Belle Glade, south of Lake Okeechobee, was never begun. In the 1940s, a seven-mile spur was built from the LaBelle branch southeast to Buckingham Army Airfield. Power line easements run on some of the former right of way of both the LaBelle and Punta Rassa Branches.

The line through Alva to LaBelle served mostly the citrus groves along the way. Packinghouse Road, from the Route 80 light at the Broadway Street drawbridge took wagons and trucks from the surrounding groves to the packinghouse and railroad depot near where the former 'Woodsmen' fraternal order meeting house, being repurposed now under new ownership, still stands. Before their own lodge was built the men and their families met in the depot.

George Austin remembers helping to load ice bunker railroad box cars in the early 1950's with citrus and produce heading north at the Alva packinghouse. He believes the railroad ended the river steamboat packinghouses, and then trucks on newly paved route 80 helped to end the railroad. So far as I could find out there was never regular passenger service from LaBelle to Fort Myers.



A Pasco County citrus packing house on a Seaboard Line



Buckingham

There also was a building in the Charleston Park area at the huge Floweree Groves. There is still a Floweree Grove Drive shown on Google Maps, just north of the Charleston Park water plant, but unmarked except for a cattle gate as the Caloosa Preserve development now owns that land. Charleston Park's Railroad Street is still marked as such.

Unlike the east coast route, the west coast route was not as successful and would exist for less than thirty years; the Seaboard Air Line went bankrupt in 1930 after the collapse of the land boom and discontinued service to Naples in 1942. The Atlantic Coast Line Railroad connected Fort Myers to Naples until 1979. The rest of the west coast route was abandoned and removed by 1952.

Just for a moment, close your eyes. Place yourself on a bank of the Caloosahatchee River on a warm mid-summer day by the old Alva swing bridge. Can you hear it? Just a mile or less away over the roadway to the south, through the groves ripening in the sun, the wail of a steam engines horn telling all she's coming into the Alva depot to take on more produce of this fast-growing part of Lee County, and Hendry beyond.

Once there was a railroad in Alva. And today, if you really try, you can still hear our own 'Orange Blossom Special' roll through, if you just listen hard enough.



Charleston Park



*Reducing Hunger, Improving Lives
Worldwide*

ECHO's primary functions are providing agricultural information to overseas workers, distributing seeds for promising food plants, and offering training opportunities at the Florida farm

The global farm is not only a hands on training ground for those searching for help in tropical agriculture, but also an educational tool to make the public aware of hunger related issues and the answers there are to alleviate malnutrition and starvation.



17391 Durrance Road, North Fort Myers, FL 33917 |
239.543.3246 | info@echonet.org

<https://www.echonet.org/>

Global Farm Tour Schedule:

Tuesday thru Saturday (Dec. thru April): 9:30 and 1:30

Tuesday, Friday & Saturday (May thru Nov.): 9:30

Closed Sundays and Holidays

Nearly every aspect of ECHO's ministry has experienced substantial growth. The permanent staff is still growing with over 65 members. Volunteers give over 75,000 hours of work yearly.



There are six fenced-in "Dog Parks" which allow for off-leash play. On-leash dog walking is allowed at many locations (listed below).

Dogs must be accompanied by an adult and must remain on-leash at all times while walking in the park.

Dogs are not permitted on playgrounds, ballfields, dugouts, bleachers, lakes/ponds, swimming pools, water parks, indoor buildings, areas where food is handled, and other areas with posted signs.

Dogs must not act in a threatening or menacing manner and must not be permitted to destroy park property or disturb wildlife.

Dogs must be wearing a collar with a valid Lee County License. Read the full county ordinance 18-12.

Please remember to attend to the doo! Uncollected pet waste can degrade the water quality in Lee County. To learn more visit DoYourDuty.org.

Find out more at:

<https://www.leegov.com/parks/dog-parks>



"Rock On" in the Slough Garden

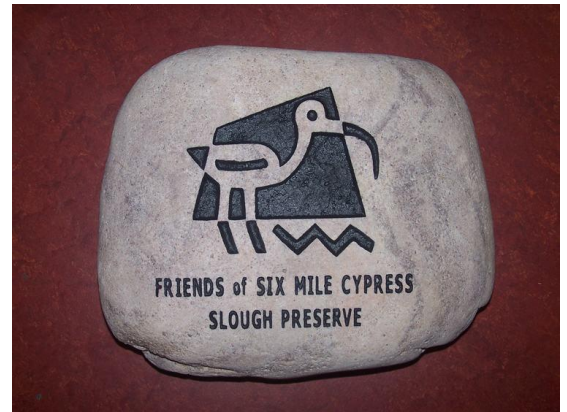
Six Mile Cypress Slough, Lee County Park

7751 Penzance Boulevard, Fort Myers, FL 33966

The Friends are launching a unique fund-raising project to support the educational programs and materials for the Slough. With a donation of \$250 to the Friends Educational Fund a beautiful natural river stone (approx. 11" – 15" in size) will be placed in the center garden at the Slough.

The stones may be engraved with a name, favorite saying, peaceful thought, or remembrance. Each stone can accommodate up to 25 characters. The stones will be placed along the center garden walkways near the main parking lot. The Rock committee anticipates that the stones will last for many years. What a great way to own your personal pathway marker in the Slough!

The stones are available at \$250 each. Please contact Terri Krass, drtkrass@gmail.com or Steve Tutko, swampscreeamer@aol.com for an order form or call the Friends at (239) 533-7557.



Manatee Park

**10901 Palm Beach Blvd,
Fort Myers, FL 33905**

Find out how many manatee are IN!

Stay in touch easily by calling

239 690 5030



Olga Community Park

2325 S Olga Dr, Fort Myers, FL 33905

(239) 533-7275

The Olga Community Center was built in 1927 and was used as a schoolhouse until 1939. In 1952, the Lee County School Board sold the building to a non-profit group called Olga Community Center Inc. In 1964, Olga Community Center Inc. turned the center over to Lee County and in 1986, Parks & Recreation assumed operational control. The center has retained its historic feel and continues to serve the local community. In 2008, the center underwent a total historic renovation

New home of Alva area AFTER SCHOOL program

Hickey's Creek Mitigation Park

17980 Palm Beach Blvd, Alva, FL, 33920



- Great for quiet creek kayaking.
- Fun for walks and picnics.
- A pond overlook.

ALVA BOAT RAMP PARK

21580 Pearl St, Alva, FL 33920

Public boat ramp with 15 parking spots. Parking fee is \$5 per day. Lee County Parking Stickers are valid at this location. Parking fills up early on weekends.

Growing larger soon



W.P. Franklin Lock & Dam South Recreation Area

Franklin Lock Rd. , Alva , FL 33920. Contact: (239) 694-2582

WP Franklin South Recreation Area is a day use area located on the Caloosahatchee River adjacent to the WP Franklin Lock and Dam. Visitors can watch boats traversing the 152 mile Okeechobee Waterway that spans South Florida from the Atlantic Ocean to the Gulf of Mexico, enjoy the exhibits at the visitor center or just relax with a picnic lunch.

Consider becoming a volunteer WORKCAMPER here for the Corps of Engineers and stay while you work at no cost.

This day use area has a visitor center, boat ramp, volleyball and horseshoe courts, a playground and several covered picnic sites. Flush toilets and drinking water are also available. There are two group picnic shelters available for reservation. Each shelter has water and electricity, six picnic tables, a large charcoal BBQ grill and can accommodate up to 50 people.



Alva Community Center PARK

21471 North River Road, Alva, FL 33920 , (239) 728-2882

Three of the many activities here:

Girl Scouts , Community Meetings, AA meetings every Wednesday

The Alva Community Center is part of the Alva Community Park, behind the Alva Middle & Elementary Schools. Lee County acquired the 5-acre property in 1966. In the early 70's the center was home of the first Alva Fire House and community gathering place. The building was completed by the efforts of volunteers and concerned citizens.

Caloosahatchee Regional Park



19130 North River Road, Alva, FL 33920 (239) 694-0398

EMAIL: leeparks@leegov.com

Shelter rentals, primitive tent camping, Horse and bike trails.

This park features 768 acres of pine flatwoods, scrub oak, cypress swamps, and oak hammocks. Crossing through them, you'll find over 20 miles of hiking, mountain biking, and equestrian trails. The north side of the park is designated for mountain biking and horseback riding. The south side of the park has hiking trails, fishing pier, a floating dock, and the primitive campground. Primitive camping sites for families and groups are available, along with equestrian sites for people with horses. Kayaking and fishing are available along the banks of the Caloosahatchee River. Covered pavilions are available for group use or special events. Located along the Caloosahatchee River, it is an area rich in natural history. Calusa Indians are believed to be the first settlers here, followed by Seminole and early settlers of what is now known as Alva. Early studies have also found two archaeological sites within the park.

NORTH FORT MYERS Recreation Park

2000 North Recreation Park Way

North Fort Myers, FL 33903



Disc Golf Course

This park features an 18 hole Disc Golf course For more information call (239) 297-8916.

League Partnerships

Pop Warner: (239) 997-4900

Babe Ruth Baseball: (239) 995-7011

Shuffleboard: (239) 997-2797

Membership to any Lee County Rec Center costs \$10 per individual or \$25 per family for a lifetime membership. Membership entitles general use of the four large Recreation Centers in Lee County including gymnasium activities and use of the "Rec Room". Enrollment in programs and use of the fitness center may have an additional monthly fee.



Veterans Park Recreation Center

55 Homestead Road South

Lehigh Acres, FL 33936

Contact Information (239) 369-1521

DFlora@leegov.com



ALVA FIRE CONTROL & RESCUE SERVICE

2660 Styles Road, Alva, Florida 33920

(239) 728-2223

This is a \$5,000 Donation we received in November from Preferred Training Incentives for safety related purchases made throughout the year on items such as bunker gear. It's a 50/50 program our workers compensation, Preferred Governmental Insurance Trust, Offers. We spent \$10,000.00 and received \$5,000.00 back.



SEASONAL REMINDER!

More batteries are purchased in the Christmas Season than any other time of year.

Why not choose this season to give yourself And your family a gift of SAFETY?

Smoke detector batteries should NOT be changed when they start to beep. They need to be changed EVERY 12 months. Why not make December 1 your smoke detector battery upgrade day!?



Lee County Conservation 20/20 manages 48 preserves spread throughout Lee County, including within the boundaries of most cities. These preserves combined total nearly 30,000 acres.

Alva has several preserves up and down the river from Alva Village.

All preserves are open to the public for hiking, wildlife observation, and nature study. Several preserves offer additional recreation opportunities, including fishing, kayaking and canoeing, and horseback riding. Search recreation activities online or download recreation and amenities chart online.



Alva Scrub Preserve

Preserves are open daily during daylight hours. Access may be limited at certain locations due to temporary flooding, special restoration projects, or isolated location. Information about each Conservation 20/20 preserve can be accessed from the website: <http://www.leegov.com/conservation2020/preserves>



Bob Janes Preserve



Daniel's Preserve at Spanish Creek



Olga Shores Preserve



Buckingham Trails Preserve



Telegraph Creek Preserve

Fort Myers MEALS ON WHEELS now serves homebounds of any age and for any short or long term need in the ALVA area!



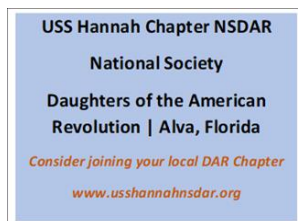
Our caring Meals on Wheels volunteers provide daily, nutritious home-delivered meals and a friendly, safety and security check to eligible homebound neighbors who cannot shop or cook for themselves. These neighbors include seniors, the disabled, or chronically ill adults under the age of 60.

VOLUNTEER FOR MEALS ON WHEELS

WWW.COMMUNITYCOOPERATIVE.COM

To become a volunteer driver/deliverer to clients, or to become a client receiver of meals and other services, please contact:

Rose Goree-Lawrence, Admin. Asst., PO Box 2143, Fort Myers, FL 33909 or call her at 239-337-1055 or email her at Rose@CommunityCooperative.com



On December 14th at 12 noon there will be a wreath laying ceremony at the ALVA Cemetery to honor all our veterans who have served our country so proudly.

To sponsor wreaths, visit www.wreathsasscrossamerica.org. When the page comes up go to Local Fundraising Group. Type in our name USS Hannah Chapter, NSDAR. **Volunteers are also needed for this event and can register through the website link provided above.**

Click on that and Alva Cemetery will come up. Then you can place your order and we will get credit for it. Thank you for your support!!

- Group Name: USS Hannah Chapter, NSDAR / Group ID: 0533P which will automatically link to
- Alva Cemetery, Cemetery Road, Alva, FL 33920 / Location ID: FLACAF



Fight for the Light at SR31 and SR78

If you are a concerned resident or worker in Alva, North Olga, Babcock Ranch or North Fort Myers, Florida, please sign this petition and help Fight For The Light!

Sign the petition on here or FACEBOOK now:

www.thepetitionsite.com/960/363/539/fight-for-the-light-at-sr31-and-sr78/

Or call for information: Sue Bisplinghoff, 239 980 2470



7305 FL-78, Fort
Denaud, FL 33935

(863) 675-0334



CHOOSE RIVERSIDE FOR YOUR GROUP'S CHRISTMAS PARTY!

CHRISTMAS AT CAMP

Let Riverside do the work for your group's Christmas party this year. Reserve your 4 hour party today! Each party has appetizers, classic camp activities, and Christmas activities complete with a holiday meal. Lunch parties run 10:00AM - 2:00PM and Dinner parties are 3:00PM - 7:00PM throughout the month of December.

Questions and reservations contact Kimi
kimi@friverside.org
 863-675-0334 ext. 303

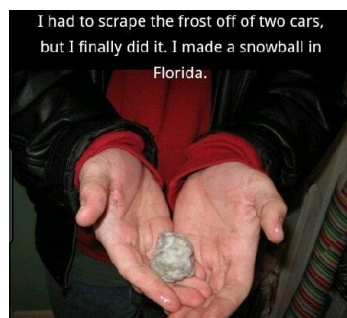
JANUARY 17-19, 2020

FAMILY CAMP OUT

S'MORE FAMILY S'MORE FUN S'MORE JESUS

Join us for a weekend of fun for the whole family! You bring the tents and we will supply the meals -from Saturday breakfast - Sunday breakfast and classic camp activities for the whole weekend! This event is only \$50 per person.

Register today at www.friverside.org/year-round-programs
 Questions? email: kimi@friverside.org



From your Lee County Sheriff's
Department

S.A.F.E. Women

Classes: December 4 & 5



You are your own best defense. Join us for one of our S.A.F.E. Women classes as we introduce a few basic self-defense moves that every woman, no matter her age, should know. The goal of S.A.F.E. is to educate women about realistic options that will help them avoid...escape...and survive assaults if they do occur.

S.A.F.E. is an unparalleled educational awareness and interactive crime prevention program providing women with information that may reduce their risk of exposure to violence and introduces them to the physical aspects of self-defense.

"90% of self-defense is awareness, risk reduction and avoiding confrontation...only 10% is physical."



You must be at least 13 years of age to take this class. Anyone between 13 and 17 years of age must be accompanied by mom or an adult female guardian.

There is plenty of parking in the front parking lot of the Lee County Sheriff's Office. Make sure to arrive 15 to 20 minutes early to make it back to the training room before class starts as all attendees must be escorted back.

All questions may be directed to the Lee County Sheriff's Office Crime Prevention Unit at 239-258-3280 or CommunityRelations@SheriffLeeFL.org.



Southwest Florida Cooking by



MAGGIE McMann

Florida Snowball Cookies

1/2-pound butter

6 T powdered sugar

2 c flour

1/2 fine chopped pecans

Pinch of salt

Cream butter and sugar together with a mixer. Add the flour.

Roll into a ball the size of a walnut. Bake in a slow oven of 325 13-17 minutes.

Cool a few minutes. Roll cookie in powdered sugar

Note: do not brown cookies.



Christmas Potato chip dip

Christmas traditions.... this is one of my Mother's...she always made this chip dip around Christmas and New Year's when company came over for light snacks...I've never tasted a chip dip like it...odd ingredients but that hint of sweetness with the saltiness is over the moon! Use local Florida produce!

3 eggs beaten

3 T bps vinegar

2 Tbsp sugar

8 oz Philadelphia cream cheese

1/4 c chopped green pepper

1 small onion chopped fine



Cook in a double boiler the eggs, vinegar, sugar until thick. Cool a bit.

Combine remaining ingredients and beat all together with mixer, Refrigerate.





Calusa Waterkeeper is a non-profit organization dedicated to the protection of the Caloosahatchee River & Estuary in Southwest Florida.

Join Our Team! Become a Certified Ranger

Participants should have access to area waters by boat or paddle craft. No prior experience needed. Classes held at the Calusa Nature Center, Iona House.



info@calusawaterkeeper.org

239) 784-0880

SFWMD Public Workshop on Water Quality

WHEN: December 11, 2019 @ 10:00 am – 4:00 pm , WHERE: South Florida Water Management District

3301 Gun Club Road, West Palm Beach, FL

The SFWMD Governing Board is encouraging the public to attend their monthly workshops which are part of the District's ongoing efforts to explore all facets of the region's water resource issues and encourage public participation.



JUST BE KIND

Polly Kiely of Alva was inspired to begin an Alva sign movement when she learned of a Central Indiana youth project started in 2015.

The origin of the JUST BE KIND sign movement:

<https://fox59.com/2018/08/08/just-be-kind-movement-spreading-worldwide/>

To find out more about Polly's local efforts and how you may become a part of them contact Polly at: pbkiely@embarqmail.com





Your RIVERDALE LIBRARY

**Location: 2421
Buckingham Road
Fort Myers, FL**

Hours: Tuesday (Noon-8)

Wednesday and Thursday (10-6)

Friday and Saturday (9-5)

Closed Sundays and Mondays

Contact: 239-533-4370, Branch Manager: Alyssa Diekman.

For more information, please visit us at www.leelibrary.net or call 239-479-INFO.



Homeschool and Homework Help program

Riverdale Branch Library will be hosting a Homeschool and Homework Help program on

Thursday, December 5 from 1:30-5:30pm.

Get ready to learn in this open study session where students and caregivers can discover online and in-library resources to help them make the grade. Check out the tools the library has to offer for parents, children, and teens, as well as the opportunity to meet others within the community.

Homeschoolers are welcome. Caregivers should accompany students ages 5 to 8. Library staff and volunteers will be available.



Alva Angel's is a charitable organization in its 25th year. We are a 501c3 charity and we have been supporting Buckingham, Alva, Lehigh and East Fort Myers communities for 25 years. We help families in need throughout the year but the holidays are our busier time.

We are blessed to have several businesses and organizations in our area who support us. You will see our gift tags on trees at Buckingham Farms, The Spa at the Shores, The Alva Market, Gails Salon and St. Vincent de Paul Church.

This year we have committed to nearly 50 families so far with over 150 children. If anyone knows of other businesses who may want to help us by allowing a small trees with tags as well as to ask for our communities support in either taking tags and purchasing the items on the tag and returning it unwrapped to where you got it, or making a financial donation so we can purchase food items for the families to have a holiday meal.

Come help us WRAP! Saturday, December 21 at Saint Vincent de Paul Church on State Road 80 we usually get started about 9 o'clock and wrap up by 1 o'clock.

Please like us on Facebook Alva Angels, LLC for more information.





ALVA GARDEN CLUB

Open to **EVERYONE!**



<http://www.fmlcgardencouncil.com/council-directory/102/alva-garden-club/>



The ALVA MUSEUM

A visit worth your time!

**in the historic Alva Library Building,
one of the oldest library buildings in existence
anywhere in Florida**

Over the past
year the Alva

Museum buildings and grounds have
undergone a complete historic rehabilitation.

The museum board and a co-sponsor of the
museum's access to the public, the Alva Garden
Club, invites you to contact them (see website
above) for a private tour of the museum or to
visit during open hours, October through May
any Saturday afternoon, 2 to 4 pm.

www.alvaflmuseum.com



**Grand RE-OPENING was held on
November 9**



Southwest Florida TIPS

Discover what's flying overhead

(TY RSW Airport)

The Lee County Port Authority offers a service provided by Brüel & Kjær called WebTrak. This system can be used to gain insight on flight tracks and characteristics around Southwest Florida International Airport. By adding your address into the system, it will compare flight tracks to the location of your home and provide information such as distance, direction, altitude, type of aircraft, etc. Access WebTrak by clicking the following link: webtrak.bksv.com/rsw



Discover how to NOT get ripped off by a home contractor

(TY <https://www.taylorrentalnaples.com/>)



Inaccessibility: Communication is a weak point for many home improvement pros. But keeping you posted on job progress and being available to answer your questions is the mark of a real professional. If you have to leave several messages with a contractor to get a returned call, consider it a red flag and stay away.

Up Selling: If you've asked a contractor come to your house about water damage, don't let him talk you into a deck. Make sure he follows through on the task at hand first.

Hard Sell: If a contractor tells you his price is good for "today only," keep looking. A good deal today should be a good deal tomorrow.

Door-to-Door Salesmen: Uninvited contractors that work neighborhoods offering to seal driveways or power wash roofs may not have your best interest in mind. Consider them uninvited pests.

Panic Peddlers: Panic peddling is a common home improvement scam, especially when safety is involved. Chimney sweeps, for example, are infamous for advertising a low cost chimney cleaning service to get their foot in your door. After a brief "inspection," they'll invariably find a fatal flaw in your chimney, which requires thousands of dollars of their services to fix. If a contractor tries this one on you, ask him to leave and get a second opinion from someone without a repair to sell, like a professional home inspector.

Payment Policies: Contractors who call for cash up front, especially full payment, should be avoided like the plague. A small down payment is reasonable with future payments based on progress made on your project.



Some of our local ALVA area churches:

St. Vincent DePaul's RC Church

13031 Palm Beach Boulevard, Fort Myers, FL 33905

www.stvincentftmyers.org

239-693-0818

Alva United Methodist Church

21440 Pearl St. P.O Box 96

Alva, FL 33920

Alvamc@embargmail.com

239-728-2277

Alva Church of God

21520 Park St, Alva, Florida 33920

239-728-2644

Liberation International Church

Avenue D, Charleston Park

Alva, FL 33920, 239-601-4870

**Charleston Park Community
Center**

FOOD PANTRY.

Every 2nd and 4th Thursday at
10am-2pm

ALVA UMC

Food Pantry @ Bethany House

Food Pantry: 9am-12pm 1st & 3rd Wednesdays

Bread Pantry: 8am-10am 2nd & 4th Wednesday

To have your church listed here simply contact me, Ken DeWalt, at kendewalt1@gmail.com with as much contact info as you can share.

First Spanish Assembly of God Church

2219 Joel Blvd, Alva, FL 33920

239-728-5440

Countryside Wesleyan Church

17750 Palm Beach Blvd, Alva, FL 33920

239-368-3270

Calvary Church

19850 Palm Beach Blvd

Alva, FL 33920

www.calvarychurchswfl.org

239-728-5566

First Baptist Church of Alva

2790 Joel Blvd, Alva, FL, 33920

www.alvabaptist.com

239-728-2034

Grace Church, Ft Myers Shores

14036 Matanzas Drive, Ft Myers, Florida 33905

www.egracechurch.com

239-694-2797

St. Vincent DePaul RC

Our Lady's Cupboard Food Pantry

Breakfast cereal and canned fruit continue to be needed in Our Lady's Cupboard Food Pantry. Call (239) 694-3985 for hours open.

RECOVERY Groups in the Alva Area



Types of 12 Step Programs in Lee County, FL: Because Alcoholics Anonymous was exclusive to people who struggled with alcohol addiction, a vast array of other programs were formed to aid and support those in recovery from other addictive disorders. These include the following groups:

Adult Children of Alcoholics (ACA), Al-Anon/Alateen (for friends and families of alcoholics), Cocaine Anonymous (CA), Clutterers Anonymous (CLA), Crystal Meth Anonymous (CMA), Co-Anon (for friends and family of addicts), CoDA –Co-Dependents Anonymous (CoDA) – for people working to end patterns of dysfunctional relationships and develop functional and healthy relationships, COSA (an auxiliary group of Sex Addicts Anonymous), COSLAA – CoSex and Love Addicts Anonymous, A –Debtors Anonymous



(DA), EA –Emotions Anonymous (EA) for recovery from mental and emotional illness, Families Anonymous (for relatives and friends of addicts), Food Addicts in Recovery Anonymous, Food Addicts Anonymous (FAA), Gamblers Anonymous (GA), Gam-Anon/Gam-A-Teen (for

friends and family members of problem gamblers), Heroin Anonymous (HA), Marijuana Anonymous, Narcotics Anonymous (NA), Nar-Anon (for friends and family members of addicts), Nicotine Anonymous (NicA), Overeaters Anonymous (OA), Online Gamers Anonymous (OLGA), Pills Anonymous (for recovery from prescription pill addiction), Sexaholics Anonymous (SA), Sex Addicts Anonymous (SAA), Sexual Compulsives Anonymous (SCA), Survivors of Incest Anonymous (SIA), Sex and Love Addicts Anonymous (SLAA), Sexual Recovery Anonymous, Underearners Anonymous, Workaholics Anonymous.

Any type of group you do not find listed below may be sought at this website: <https://www.addicted.org/directory/category/lee-county-3.html>

Before going to the meeting, confirm time and place by phone

ALVA:

St. Matthews House, Cypress Creek & North River (rte 78) Roads, Alva

Jill's Place (for women) AND Justin's Place (for men), 239-687-7633 or intake@stmatthewshouse.org.

<https://stmatthewshouse.org/whatwedo/justinsplace/jills-place-retreat-center>

FORT MYERS SHORES:

Grace UMC, Fort Myers Shores, (239) 694-2797, 4036 Matanzas Dr, Fort Myers:

-AA Open Disc: Mon, Wed, Fri, 12pm, office

-AA men: Mon, 7pm, office

-AA Women: Tues, 7pm, office

-Nar-Anon: Wed, 6:30pm, Family Room

-AA Open Disc: Thu, 8pm, Connections Cafe

-AL Anon: Fri, 12pm, Classroom 2

-AA Open Speaker: Sat, 7pm, Connection Cafe

-NA: Sat, 6:30pm, Classroom 2

-NA Step: Sun, 6pm, Classroom 2

-Launch: Wednesday January 1, 2020. A NEW, Christ focused, 12 step program for EVERYONE and every hurt, hang-up, or habit you need help changing: CHOOSE RECOVERY

St. Vincent De Paul RC, 13031 Palm Beach Blvd, Fort Myers:

-Fort Myers Shores Group OStAH – Tuesday, 8:00 pm

Calvary Assembly of God, 11431 Palm Beach Blvd, Fort Myers:

-Night Owls OD – Saturday, 10:05 pm

LEHIGH ACRES:

-AA SUNRISE GROUP - MONDAYS, WEDNESDAYS, FRIDAYS & SATURDAYS 7AM

705 Leeland Heights Blvd E, Lehigh Acres

(239) 275-5111

LEHIGH ACRES (cont):

-AA MONDAY AT A TIME - MONDAY 6:30PM

5513 8th St W, Lehigh Acres

(239) 275-5111

-AA CHAIR'S CHOICE - TUESDAY 6:30PM

5513 8th St W, Lehigh Acres

(239) 275-5111

-AA SPIRITUAL SEARCH GROUP - TUESDAY 8PM

705 Leeland Heights Blvd E, Lehigh Acres

(239) 275-5111

-AA THIRSTY THURSDAYS - THURSDAY 6:30PM

5513 8th St W, Lehigh Acres

(239) 275-5111

-AA HERE AND NOW- SUNDAY 6:30PM

5513 8th St W, Lehigh Acres, 33971,

(239) 275-5111

-NA HOPE WITHOUT DOPE - THURSDAY & SATURDAY 6:30PM

705 Leland Heights Blvd. E., Lehigh Acres,

(866) 819-5346

-AA LEHIGH SUNDAY NIGHT - SUNDAY 8PM

705 Leeland Heights Blvd E, Lehigh Acres

(239) 275-5111

-AA HEARD IT THROUGH THE GRAPEVINE - FRIDAY 6:30PM

5513 8th St W, Lehigh Acres

(239) 275-5111

-AL ANON MOVING FORWARD AFG - MONDAY 10AM

705 Leeland Heights Blvd E, Lehigh Acres

(888) 425-2666

-AA FIRST THINGS FIRST - MON-SUN 7AM

5513 8th St W, Lehigh Acres

(239) 275-5111

-AA NOONERS - MON-SUN 12PM

705 Leeland Heights Blvd E, Lehigh Acres

(239) 275-5111

LABELLE:

Good Shepherd Church, (239) 275-5111, 1098 Collingswood Pkwy, Labelle

-AA-PORT LABELLE GROUP – ODH- SUNDAY 7PM

-MAKING THE EFFORT -OLbHD- MONDAY 7:00 PM

-AS BILL SEES IT- OD- SATURDAY 9:00AM

-WED BIG BOOK GROUP- OBBH- WEDNESDAY NOON

-OPEN DISCUSSION -ODH- FRIDAY 7:00PM

First Christian Church, Rte 29 & Ford Ave, LaBelle

-LABELLE GROUP-ODAH- THURSDAY 7:00PM

-STEP GROUP-Cst- TUESDAY 7:00PM

-Al Anon- AFG - THURSDAY 7PM

138 Ford Ave, Labelle

(888) 425-2666

-AA-THURSDAY 7PM

138 Ford Ave, Labelle

(239) 275-5111

-AA-MEETING AT THE INN - WEDNESDAY 7:15PM

Port LaBelle Inn, 1568 Oxbow Dr, Labelle

(239) 275-5111

NOT TODAY - MONDAY 6:00PM

133 N Bridge St, Labelle

(866) 819-5346

IF you know of any other 12 step or non-12 step recovery group in the Alva area (From Hendry County Line to Fort Myers Shores, north and south of our river) please let me know its name, location and the phone number for information to list here. Thank you! Kendewalt1@gmail.com

**LEE COUNTY
EMERGENCY**

& SERVICE CONTACT INFORMATION

ACT-Abuse Shelter (Domestic Violence) 939-3112
Addiction Services (Salus Care) 332-6989
Alcoholics Anonymous 275-5111
Ambulance (emergency) **9-1-1**
Animal Services 533-3353
Citizens Dispute (Mediation) 533-2885
Chamber of Commerce SW Fla. 275-2102
Child Abuse 800-962-2873
Child Support Enforcement 877-769-0251
Clerk of Courts 533-5000
Code Enforcement 533-8895
Clear Point Credit Counseling 278-3121
County Commission 533-2259
Dead Animal Removal 949-6246
Division of Motor Vehicles 533-6000
Dept of Transportation-County 533-8580
Drug Abuse (Salus Care) 275-3222
Economic Crimes Unit 258-3240
Elder Abuse Hotline 800-962-2873
Elder Helpline United Way 2-1-1
Emergencies 9-1-1
Fraud Line (LCSO) 258-3287
Health Department 332-9647
Humane Society (Gulf Coast) 332-0364
Lee County Transit (Lee Tran) 533-8726
Mental Health (Salus Care) 275-3222
Legal Aid 334-6118
Libraries 479-4636
Parks & Recreation 533-7275
Poison Information Center 800-222-1222
Probation Office (County) 533-9199
Probation Office (State) 338-2349
Public Defender 533-2911
Red Cross 278-3401
School Board 334-1102
School Transportation/Bus Barn 590-4000
Social Security Administration 800-772-1213
State Attorney 533-1000
Suicide Prevention Lifeline 800-273-8255
Supervisor of Elections 533-8683
Tax Collector 533-6000
Veterans Services Office 800-827-1000

Lee County Sheriff's Office Headquarters
14750 Six Mile Cypress Pkwy
Ft. Myers, FL 33912 477-1000

North District Substation
121 Pondella Road
N. Ft. Myers, FL 33903 477-1810

East District Substation
1301 Homestead Road North
Lehigh Acres, FL 33936 477-1820

West District Substation
15650 Pine Ridge Road
Ft. Myers, FL 33908 477-1830

South District Substation
8951 Bonita Beach Road #565
Bonita Springs, FL 34135 477-1840

Bonita Springs Substation
10520 Reynolds St
Bonita Springs, FL 34135 477-1140

Central District Substation
14750 Six Mile Cypress Pkwy.
Ft. Myers, FL 33912 477-1850

Gulf Substation 282-5766

Lee County Jail (inmate information)
2115 Dr. Martin Luther King, Jr. Blvd
Ft. Myers, FL 33901 477-1500

Civil Process
2072 Victoria Avenue
Ft. Myers, FL 33901 477-1353

Lee County Gun Range
6570 Felix Romano Avenue
Fort Myers, FL 33905 690-3999

Community Relations 258-3280
Fraud Line 258-3292

Juvenile Assessment Center (JAC)
2115 Dr. Martin Luther King, Jr. Blvd
Ft. Myers, FL 33901 344-5100

**FEDERAL, STATE & LOCAL LAW
ENFORCEMENT**

Fort Myers Police 321-7700
Cape Coral Police 574-3223
Sanibel Police 472-3111
Port Authority Police 590-4810
Florida Highway Patrol 278-7100
Federal Bureau of Investigations 337-7171
Drug Enforcement Agency (DEA) 275-3662
Fla. Department of Law Enforcement 278-7080
Federal Government Info. Center 800/688-9889
Fish & Wildlife Commission 863-648-3200

WE WRITE ALL HOMES INCLUDING OLDER HOMES!!

INTEGRITY INSURANCE AGENCY



128 W. Charlotte Ave, Punta Gorda, FL 33950



INTEGRITY INSURANCE AGENCY



The Trusted Choice®

Integrity Insurance Agency has been serving all of Florida for over 20 years. The majority of our business is right here in SW Florida. A team of agents, with over 100 years of total experience, we are dedicated to the service we provide to all our clients. We can handle any insurance situation you may have. We provide coverage and service for all items listed below.

Auto, Homeowners, Renters, Condo, Manufactured Homes, Casitas, Flood, Motorcycle, RV, Boats, Golf Carts, General Liability, Commercial Package, Commercial Auto, Workers Comp, Bonds, Liquor Liability, Special Events, Life Insurance, Health Insurance, Long Term Care, Medicare Products, and Professional Liability.

We would be proud to be called your insurance agency. Since we are an Independent Agency, we have a number of companies we work with to get you the best coverage for the best price. Call Integrity today and experience the client services we provide. **941-766-1411**. You can go on our website to get more information at iiagencies.com

ON THE RIVER Alva Area Newsletter Advertising Rates as of Sep 29, 2019

This monthly newsletter is a free to subscriber on-line offering. We are not offering anything in print form at this time. We currently have over 750 subscribers. We encourage folk to share it with anyone and in any way they wish, and we place the newsletter in the Alva Florida Friends and Family Facebook Page which has over 2,000 subscribers, and the Alva Area NEXT DOOR web page which has over 3,300 subscribers.

Advertising rates for 1-month Quarter and Half Page is for a standard 9 X 11 paper page left to right, not corner blocks.

1/8th Page... \$15.00, ¼ Page... \$25.00, ½ Page... \$45.00 Full Page... \$75.00

Ads will only appear on pages after all articles and nonprofit promotions are formatted. I can format ads with WORD.doc copy and j.peg photos or logos. I can also scan any copy and/or photos you provide to create a single j.peg of your ad. Payments are to be made in full by the 15th of the month preceding the month in which the ad is to appear, which is also the date the ad copy is to be received. Payments are to be by check (made out to Ramona DeWalt, noted: OTR) or online via www.PAYPAL.com to my email address PayPal at kendewalt1@gmail.com.

What would you like all Alva to know about next month?

Send posters, photos (jpegs only) or articles of 500 words maximum you would like to see printed or contact the editor with any questions,

[Ken Dewalt1@gmail.com](mailto:Ken.Dewalt1@gmail.com)

The deadline for receipt of any material is the 15th of the month previous to the month you wish the articles to run.

Please understand that all articles are subject to available space and editor's approval.
